

ONLY
THREE LEFT!



The Enclave at Monte Sereno



monte sereno

monte-sereno.com



The Enclave at Monte Sereno

ANNOUNCING THE NEWEST RELEASE FROM AWARD-WINNING MONTE SERENO

We've broken ground on eight exciting one-level Santa Fe soft contemporary homes with Sangre de Cristo views as the backdrop. Enjoy the security of a gated compound just minutes to the Historic Plaza offered by award-winning builders with the latest in finishes and modern conveniences.

With permits in-hand on several units, we can begin building your Enclave home immediately.

We invite you to learn more about this unique opportunity by visiting monte-sereno.com



monte sereno

PAUL MCDONALD | 505.780.1008 | MATT SARGENT | 505.490.1718
monte-sereno.com



Photos show a completed traditional style Enclave home. Homes can also be modern contemporary or any style to suit the buyer.

The Enclave at Monte Sereno

PRICING

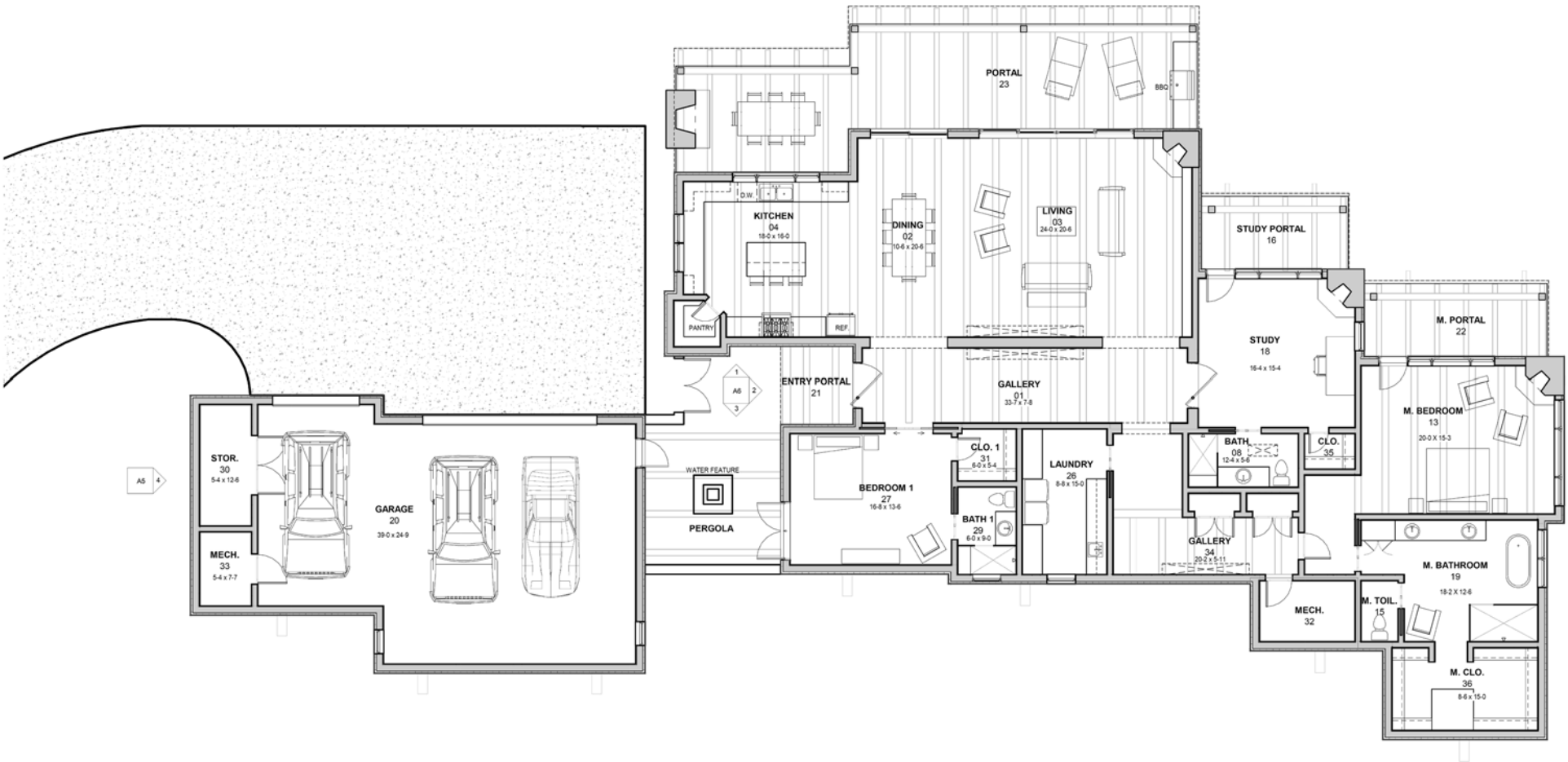
LOT #	SQ FT	BR/BA	NOTES	LIST PRICE
30	3,452	3/3	Permit in-hand	\$3,250,000
33	4,569	4/5	Includes 1,657 sq ft finished lower level Permit in-process	\$2,995,000
36	3,242	3/4	Permit in-hand	\$2,895,000

The Enclave at Monte Sereno

THE RESERVATION AND BUILDING PROCESS

- 1** **RESERVE** your future home
- 2** **MEET** the builder
- 3** **SIGN** a construction contract with builder
- 4** **SELECT** finishes and materials
- 5** **START CONSTRUCTION** on your new home!
- 6** **MOVE IN!**

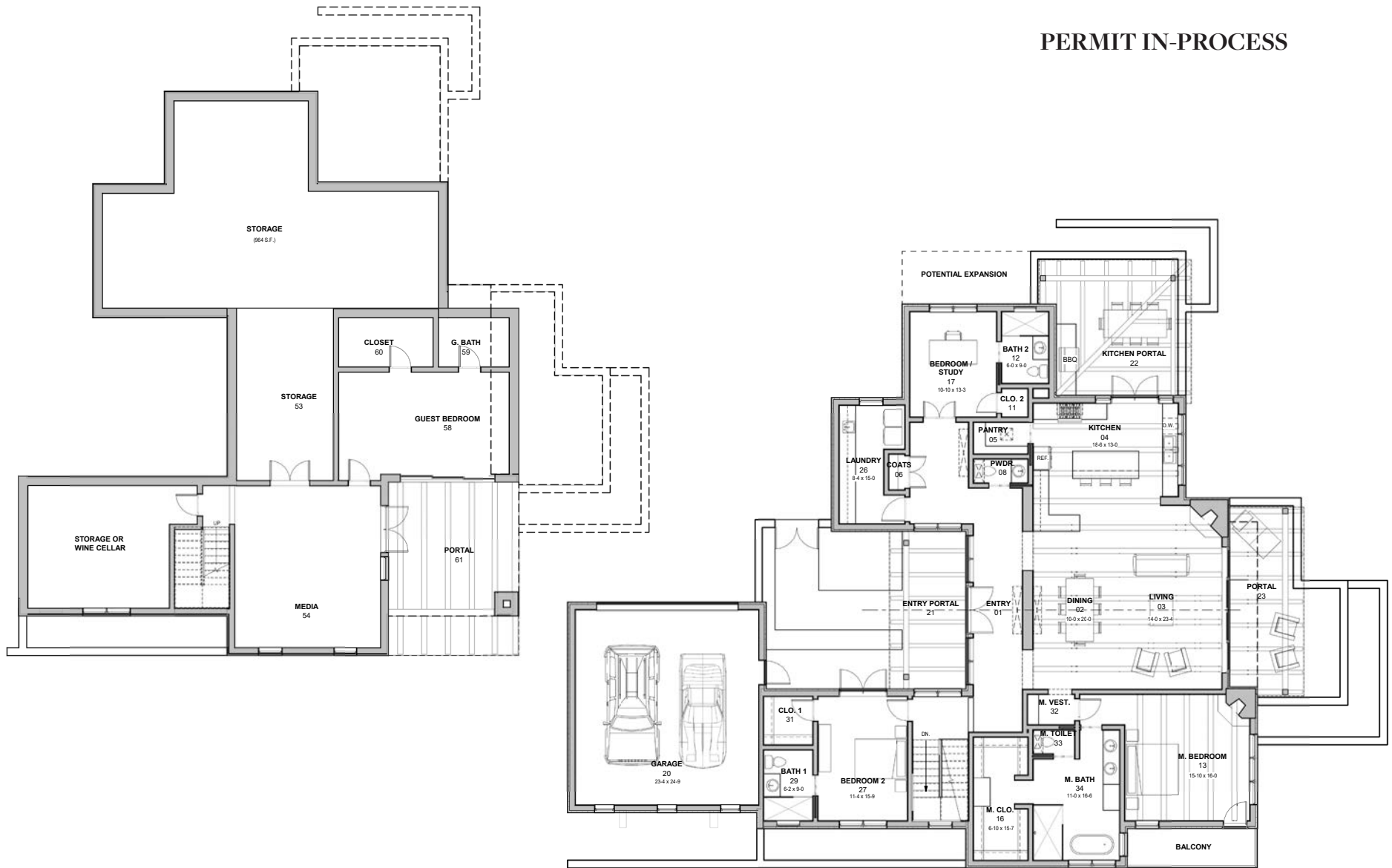
PERMIT IN-HAND



LOT 33 – MODEL 5 • FLOOR PLAN

LOT 33 – MODEL 5 • FLOOR PLAN

PERMIT IN-PROCESS



PERMIT IN-HAND

The Enclave at Monte Sereno

FEATURES

- Santa Fe Soft Contemporary Style and Design
- Unparalleled Sangre de Cristo Views
- One Level Living
- Plaster Walls through Main Rooms
- Interior Courtyard and Large View Portal
- 3-5 Bedroom Configuration
- High Ceilings, Large Pella® Windows and Glass Doors Provide Expansive Views
- Zoned Forced Air Heating and Refrigerated A/C
- In-floor Radiant Heating
- Architecturally Designed by Lorn Tryk
- Landscaped with Drip Irrigation
- Walled Portal Outdoor Space
- Custom Solid Wood Doors
- Custom Cabinetry
- High Quality, Energy-Rated Pella® Windows and Doors
- Wide plank European Oak Flooring
- Masonry or Gas Fireplaces
- Generous Appliance, Lighting and Plumbing Fixture Allowance
- Wolf/Sub-Zero Appliance Package
- Natural Stone in Kitchen & Bathrooms
- Many Green Building Features
- Wired for High-Speed Internet via Century Link Fiber Optics (960mps)
- High Energy-Efficient Construction
- Gated Secure Entry



monte sereno

The Enclave at Monte Sereno

BUILDER PROFILE

A. ODAI CONSTRUCTION

Established in 2001 A. Odai Construction is one of Santa Fe's leading residential and commercial Build/Design firms. Specializing in high-end construction of meticulously crafted luxury homes, we continually exceed our discerning clients' high expectations. We pride ourselves on being well versed with an array of design principles that the architecture of a project may demand.

Anthony and Wendi Odai develop long-term client relationships by providing excellent service and response. We understand that a custom home is more than a structure – it's a reflection of it's owners, a place where memories are made and traditions honored.

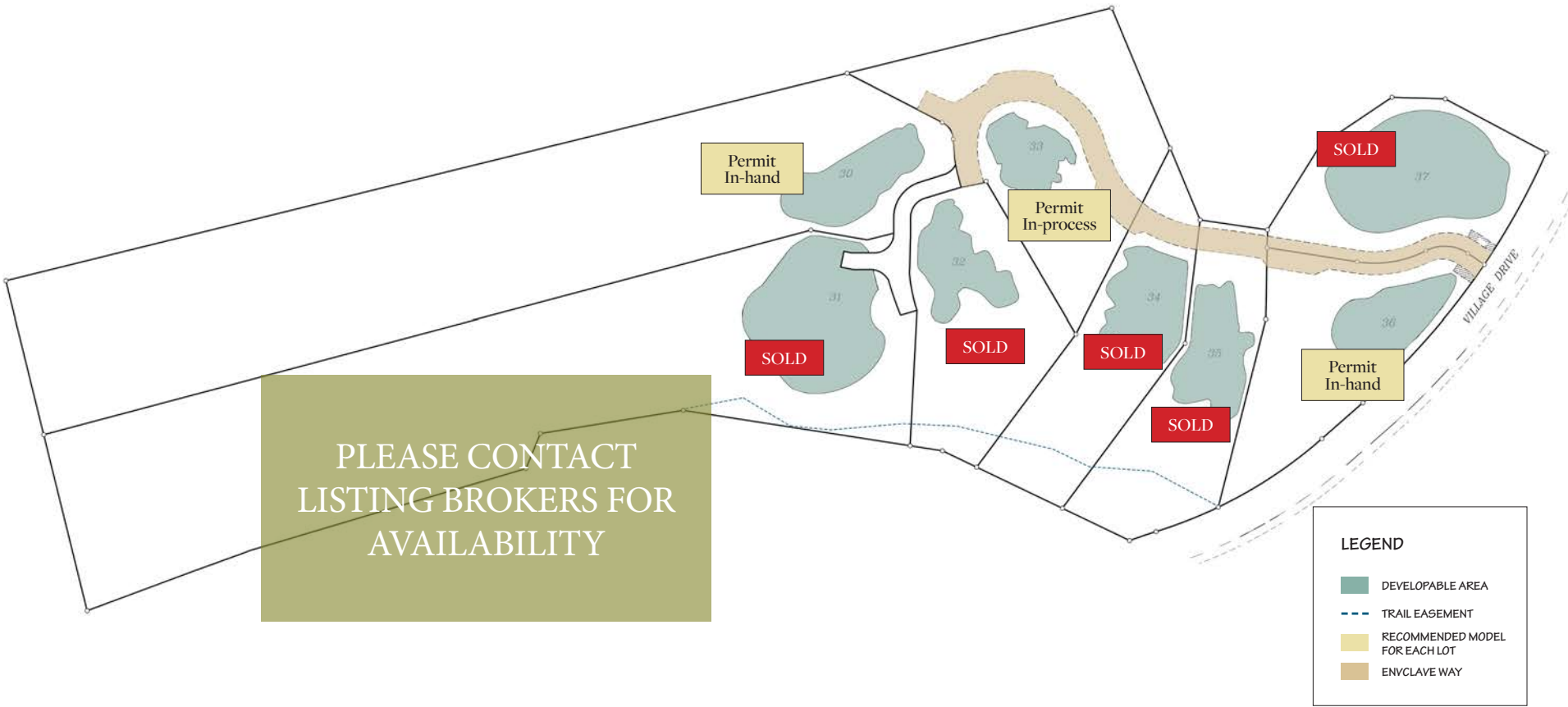
Anthony Odai 505 699 8822



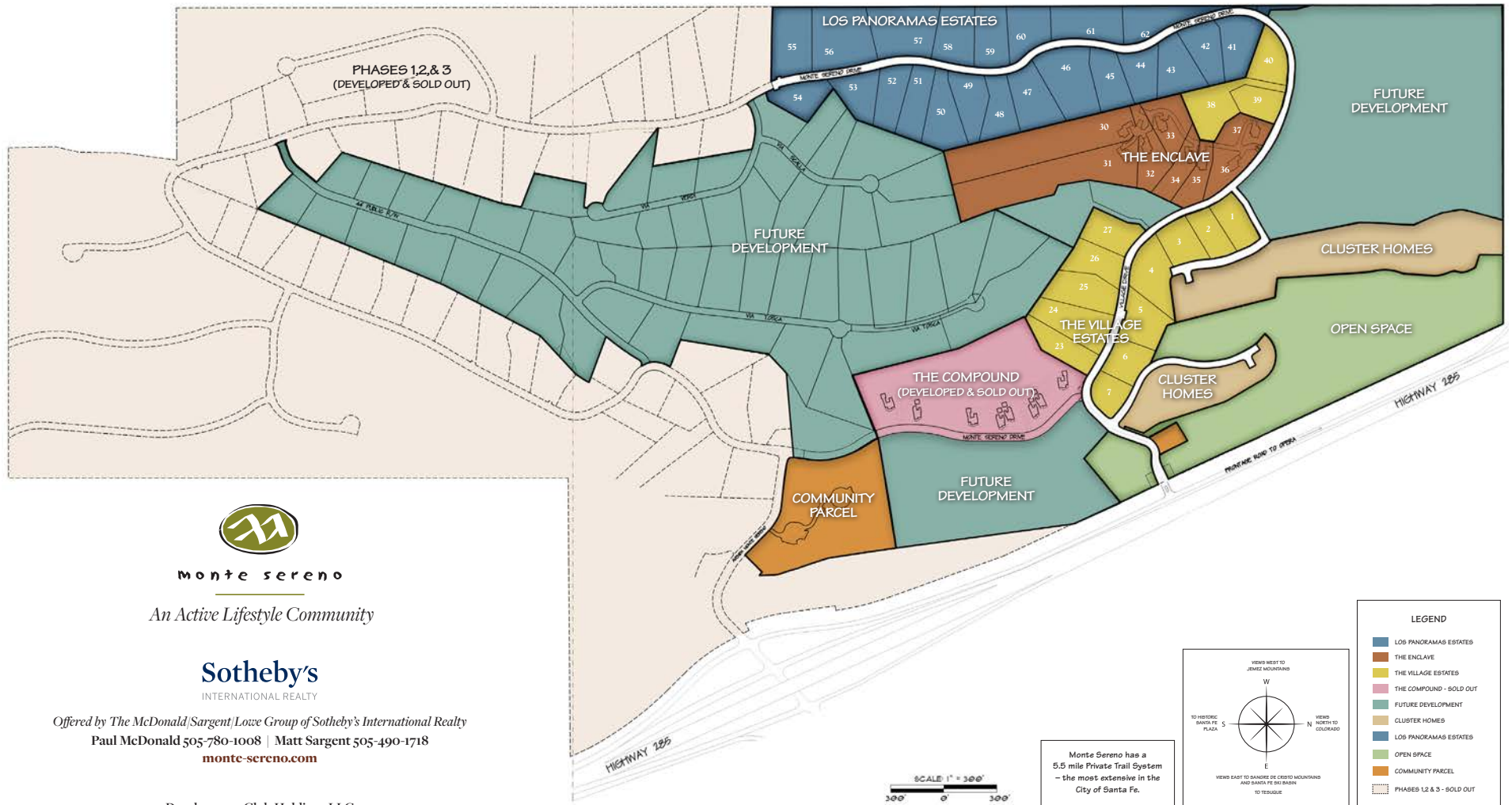
Note: Above photos show samples of builder's previous projects.



monte sereno



MONTE SERENO SUBDIVISION – PHASE 4



This plan is schematic in nature. Accuracy cannot be guaranteed and the plan is subject to change without notice.



monte sereno

Paul McDonald

505.780.1008

Matt Sargent

505.490.1718

monte-sereno.com

Sotheby's International Realty

231 Washington Avenue

Santa Fe, NM 87501

Sotheby's

INTERNATIONAL REALTY

505.988.8088

This general depiction of a portion of Monte Sereno is based on the approved Master Plan, as amended, and the subdivision plans approved by the City of Santa Fe. This depiction is subject to change, including but not limited to changes in lot sizes, the size of the "Building Sites," and the location of roads, amenities and utilities. All aspects of this depiction are not necessarily to scale. It should be noted that there are no structures shown. Any services and amenities indicated as "proposed" are conceptual in nature and the depiction of such services and amenities hereon should not be construed as a promise or a representation that the developer will commence building or complete such services or amenities. Commencement of building, the installation of infrastructure and the timing of completion are subject to a variety of circumstances.

Ownership and uses of adjoining lands are subject to change and description of that ownership is not representation that such land will or will not be developed. Any lot or parcel boundary depicted may not be accurate and should be verified on the recorded survey plats.